



CAVALLI

QP SERIES SELF-PRIMING PUMP

QPL

SELF-PRIMING
L - Long-Couple
M - MonoBlock

-

X

PUMP SIZE
S

00

CONNECTION SIZE
OUTLET (MM)
40 - 40mm
50 - 50mm
80 - 80mm
100 - 100mm

X

IMPELLER
TYPE
C - Closed
S - Semi-Open
R - Fully-Open
F - Torque Flow

-

X

SEALING
M - Mechanica Seal
D - Dynamic Seal
G - Gland Packing

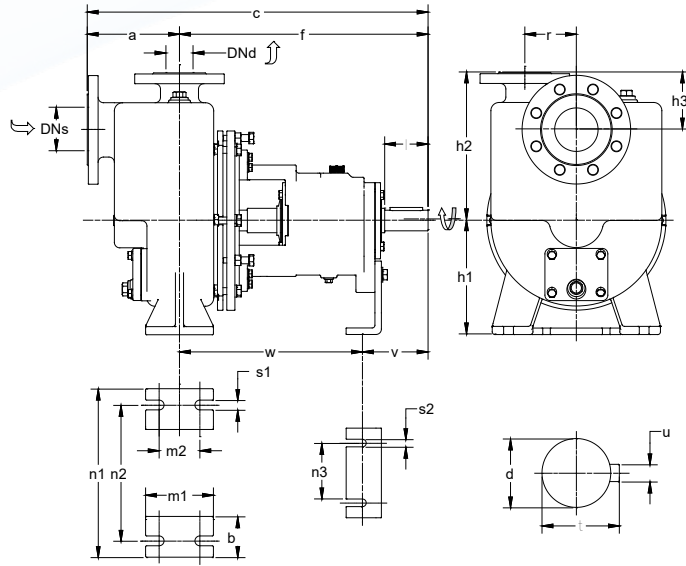
0

MOTOR
FREQUENCY
5 - 50Hz
6 - 60Hz

0

MOTOR
POLES
2 - 2-poles
3 - 2-poles
(w. reducer)
4 - 4-poles
5 - 4-poles
(w. reducer)
6 - 6-poles
7 - 6-poles
(w. reducer)

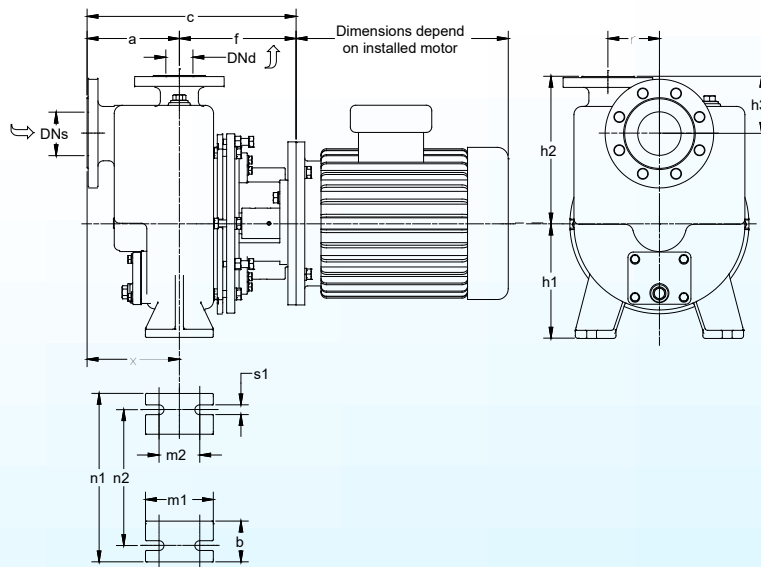
DRAWING & DIMENSIONS



QPL Series - QPL-S

Dimensions in mm

PUMP TYPE			PUMP DIMENSIONS							FOOT DIMENSIONS										SHAFT END				Weight (kg)
	DNd	DNs	a	f	c	h1	h2	h3	r	b	m1	m2	n1	n2	n3	s1	s2	v	m	d	l	t	u	
QPL-S 40	40	65	150	460	610	210	265	99	101	75	150	100	310	250	110	18	14	130	345	38	80	41	10	104
QPL-S 50	50	80	170	465	635		275	103	95		150	100							350					108
QPL-S 80	80	100	230	485	715		358	116	93		170	120							380					136
QPL-S 100R	100	125	240	485	725		375	132	117		195	145							393					150



QPM Series - QPM-S

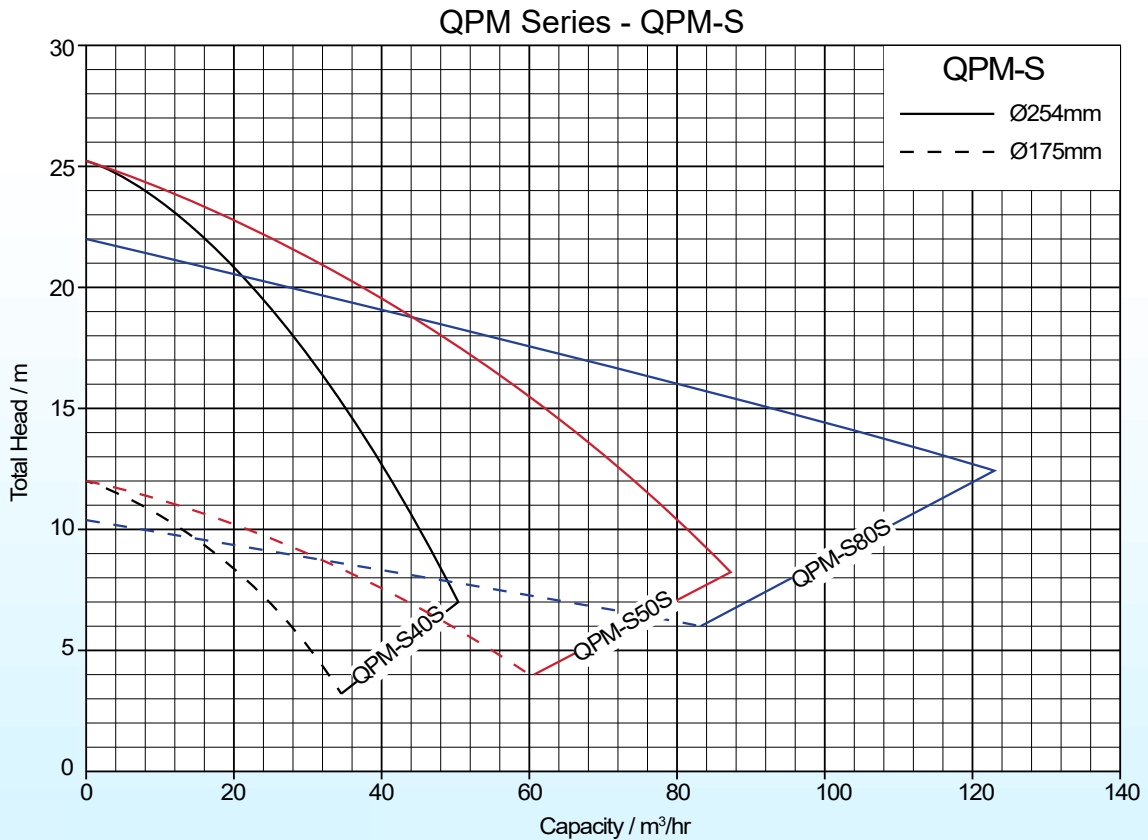
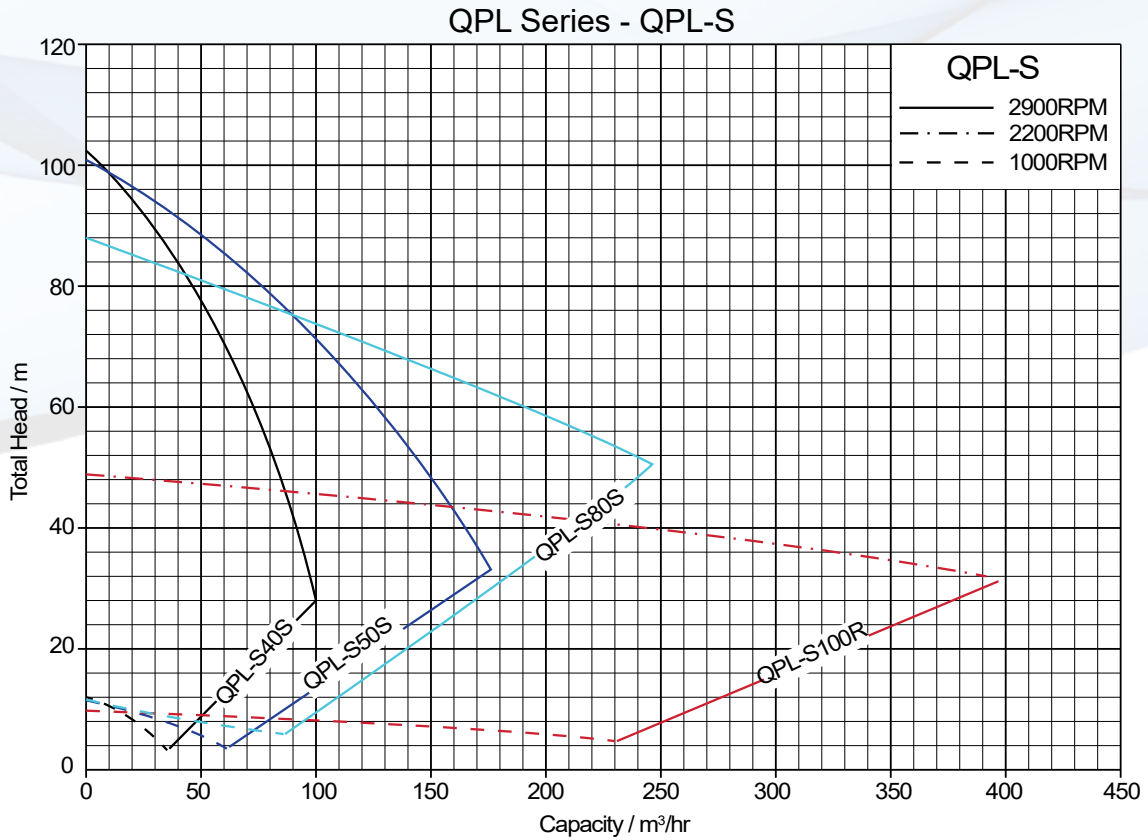
Dimensions in mm

PUMP TYPE			PUMP DIMENSIONS							FOOT DIMENSIONS							Weight (kg)
	DNd	DNs	a	f	c	h1	h2	h3	r	b	m1	m2	n1	n2	s1	x	
QPM-S 40	40	65	150	215	365	210	265	99	101	75	150	100	310	250	18	135	106
QPM-S 50	50	80	170	220	390		275	103	95		150	100				155	110
QPM-S 80	80	100	230	240	470		328	116	93		170	120				205	138

All dimensions are ± 5mm unless otherwise stated. Not to be used for construction.
 Dimensions are based on semi-open / fully-open impeller.
 Closed impeller, plus (+) another 6mm to the dimensions of f, c and w.
 Torque flow impeller, plus (+) another 30mm to the dimensions of f, c and w.
 Model QPM-S with motor horsepower 15HP or 20HP, plus (+) another 40mm to the dimensions of f and C.
 Flange dimensions according to ISO2084-PN16

CENTRIFUGAL PUMP

PERFORMANCE CURVES

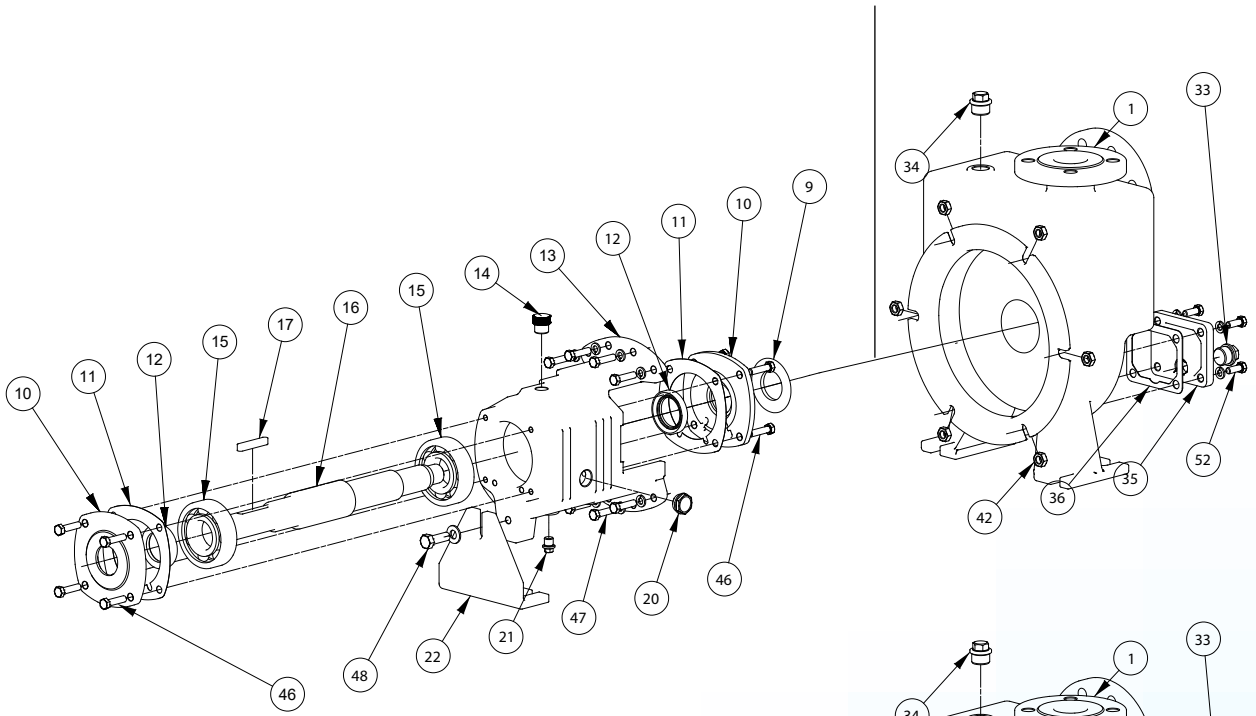


All curves are based on semi-open impeller models, except for QPL-S 100R
 Curves for QPL-S are based on full size impeller for each model.
 Curves for QPM-S are based on pump speed 1450RPM for each model.
 Performance curves are for reference only.
 Product specification are subject to changes without prior notice.

PUMP EXPLODED VIEW

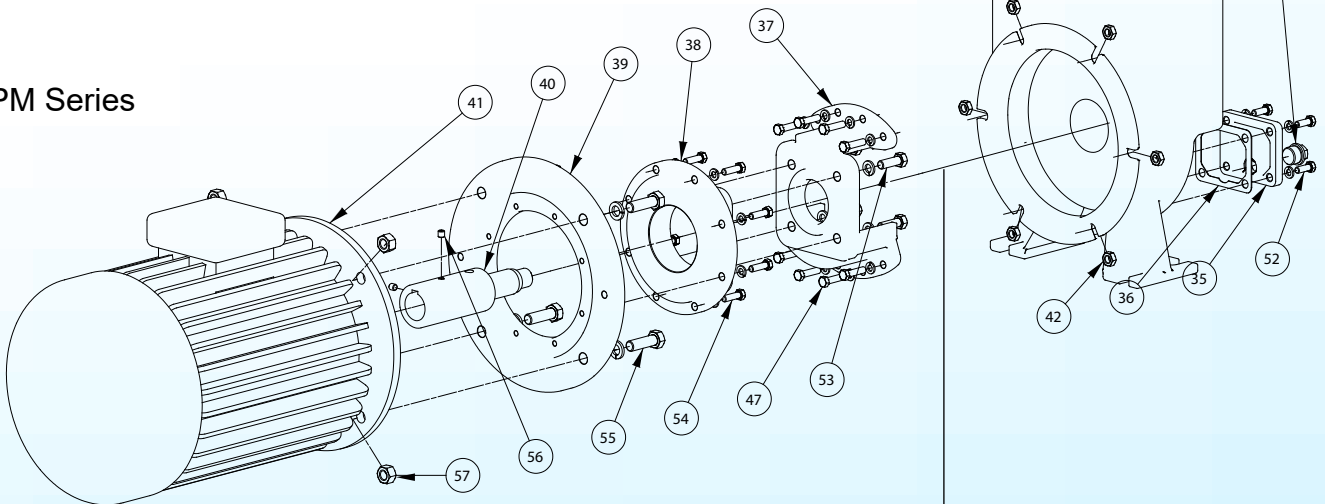
QPL Series

M - Mechanical Seal
D - Dynamic Seal
G - Gland Packing



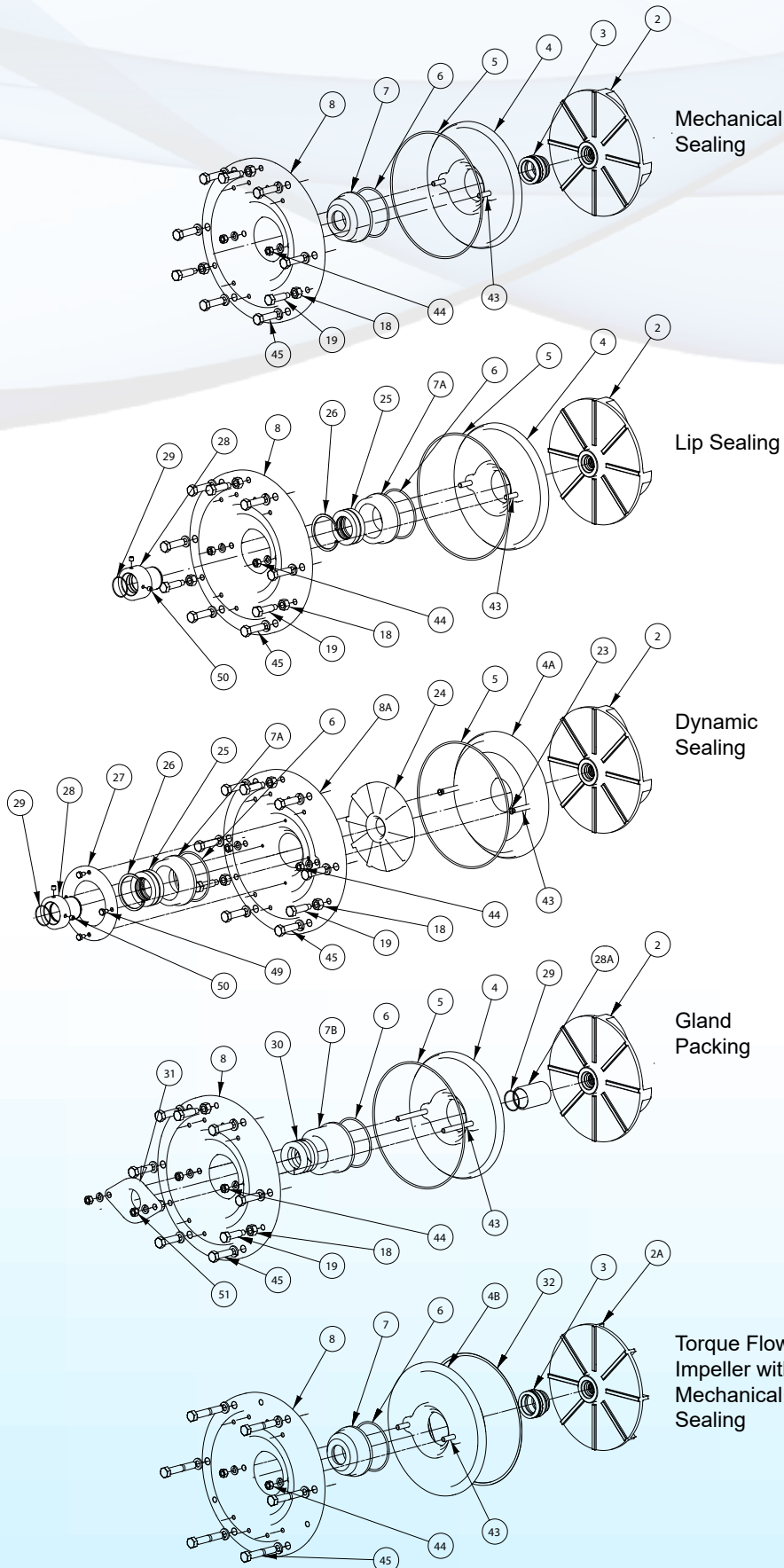
QPM Series

M - Mechanical Seal
D - Dynamic Seal
G - Gland Packing



CENTRIFUGAL PUMP

PARTS LIST



No.	Parts	Standard Material
1	Casing	Stainless Steel
2	Semi-Open Impeller	Stainless Steel
2A	Torque Flow Impeller	Stainless Steel
3	Mechanical Seal	Stainless Steel
4	Casing Cover for Mechanical Sealing, Lip Sealing and Gland Packing	Carbon vs Ceramic
4A	Casing Cover for Dynamic Sealing	Stainless Steel
4B	Casing Cover for Torque Flow Impeller with Mechanical Sealing, Lip Sealing and Gland Packing	Stainless Steel
5	Casing Cover O-Ring	Synthetic Rubber
6	Sealing Chamber O-Ring	Synthetic Rubber
7	Sealing Chamber for Mechanical Sealing	Stainless Steel
7A	Sealing Chamber for Lip Sealing and Dynamic Sealing	Stainless Steel
7B	Sealing Chamber for Gland Packing	Stainless Steel
8	Adapter Extension Ring for Mechanical Sealing, Lip Sealing and Gland Packing	Cast Iron
8A	Adapter Extension Ring for Dynamic Sealing	Stainless Steel
9	Deflector	Synthetic Rubber
10	Bearing Cover	Cast Iron
11	Bearing Cover Gasket	Oil Proof Paper
12	Oil Seal	Synthetic Rubber
13	Bearing Bracket	Cast Iron
14	Oil Cover	Aluminium Alloy
15	Bearing	Steel
16	Shaft	Stainless Steel
17	Shaft End Key	Stainless Steel
18	Jam Nut	Steel
19	Clearance Adjusting Screw	Steel
20	Oil Gauge	Plastic Threaded
21	Bearing Bracket Drain Plug	Galvanise Steel
22	Support Foot	Cast Iron
23	Casing Cover Stud O-Ring	Synthetic Rubber
24	Expeller	Stainless Steel
25	Lip Seal	Synthetic Rubber + PTFE
26	Cir Clip	Steel
27	Sealing Chamber Holding Bracket	Cast Iron
28	Shaft Sleeve for Lip Sealing and Dynamic Sealing	Stainless Steel
28A	Shaft Sleeve for Gland Packing	Stainless Steel
29	Shaft Sleeve O-Ring	Synthetic Rubber
30	Packing	Cotton
31	Gland	Stainless Steel
32	Casing Cover Gasket	Asbestos Sheet
33	Casing Drain Plug	Stainless Steel
34	Venting Plug	Stainless Steel
35	Casing Drain Cover	Stainless Steel
36	Casing Drain Cover Gasket	Synthetic Rubber
37	Frame Adaptor	Cast Iron
38	Motor Frame Adaptor	Cast Iron
39	Motor Adaptor Extension Ring	Cast Iron
40	Motor Extension Shaft	Stainless Steel
41	Flange Mounted Motor	-
42	Casing Nut	Steel
43	Casing Cover Stud	Steel
44	Casing Cover Nut	Steel
45	Casing Bolt	Steel
46	Bearing Cover Bolt	Steel
47	Adaptor Extension Ring Bold	Steel
48	Support Foot Bolt	Steel
49	Sealing Chamber Holding Bracket Bolt	Steel
50	Shaft Sleeve Set Screw	Steel
51	Gland Nut	Steel
52	Casing Drain Cover Bolt	Steel
53	Motor Frame Adaptor Bolt	Steel
54	Motor Adaptor Extension Ring Bolt	Steel
55	Motor Bolt	Steel
56	Motor Extension Shaft Set Screw	Steel
57	Motor Nut	Steel